

Community Planning



Communities are at the intersection of people and place. A successful and sustainable community gives priority to human activities and balances these activities with safety, access, freedom, privacy, social interaction, and pride. The future growth patterns of our communities need to focus on the efficient use of land and the effective use of public funds for transportation and land use integration. For many areas, this means smart growth: a balance of mixed use urban infill, walkable communities, and transportation alternatives. Community planning needs to respect the existing community character and culture, bring neighbors together to create a sense of place, and encourage reinvestment and economic vitality.

KTU+A promotes a “Think Small” planning philosophy: the application of big ideas applied at a human scale to provide fine-grained solutions for our communities. Key to the success of this approach is the invitation for neighbors to partner with us in the planning of the communities where they live, work, and play.

Community Plans
Design Guidelines
Smart Growth
Master Plans
Mixed Use Urban Infill
Transit Oriented Design
Urban Public Spaces
Neighborhood Studies
Wayfinding/Signage
Workshop Facilitation



3916 Normal Street
San Diego, CA 92103
619 294-4477
www.ktua.com



Market Leader:
Mike Singleton, ASLA, AICP CTP, LEED AP
mike@ktua.com

Community Planning

COMMUNITY PLANS

- North Park Community Plan Update
- Uptown Community Plan Update Mobility Element, San Diego

MASTER PLANS

- El Corozon de Oceanside Master Plan, Oceanside
- Girl Scout Facilities Master Plan, San Diego County
- Father Joe's Children's Village, Campo
- Rancho San Vicente, Campo

URBAN PUBLIC SPACES

- Lincoln Avenue Community Avenue and Pedestrian Connection, San Diego
- Mid-City Transit Gateway, San Diego
- North Ocean Beach Gateway, San Diego

SMART GROWTH/TOD

- Main Street Promenade, Lemon Grove
- 8th Street Corridor Smart Growth Project, National City
- C Street Master Plan, San Diego
- North County Transit District Land Use Studies, Oceanside, Carlsbad, Escondido
- University Towne Center Transit Station Urban Design Study, San Diego
- SANDAG Parking and Trip Generation Rate Assessments, San Diego
- SANDAG Smart Growth Design Guidelines, San Diego

MIXED USE URBAN INFILL

- Linda Vista Redevelopment, San Diego
- Jacobs Center/Market Creek Plaza Urban Studies, San Diego
- Downtown Porterville Redevelopment, Porterville
- Downtown Delano Redevelopment, Delano
- Tulare Redevelopment, Tulare
- Yuma Waterfront Development, Yuma
- North Park Library Concept Plans, San Diego

NEIGHBORHOOD STUDIES

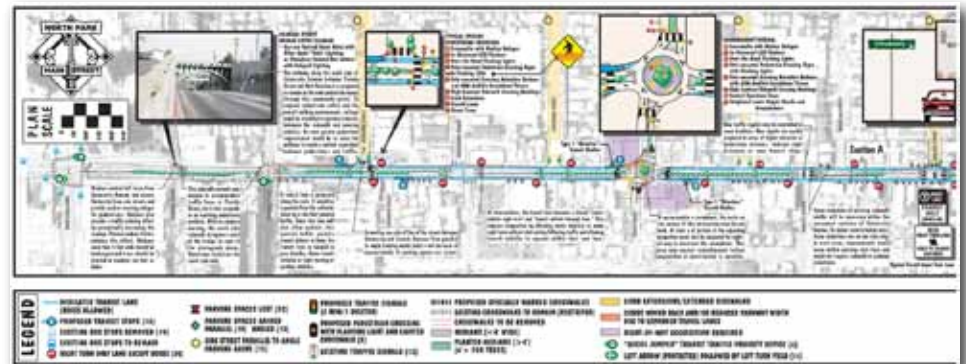
- University Avenue North Park Traffic Calming Study, San Diego
- Hillcrest Parking Study, San Diego
- Uptown Traffic Calming Study, San Diego

WAYFINDING/SIGNAGE

- Cal State San Marcos Campus Wayfinding and ADA Accessibility
- CCDC Downtown Signage Master Plan, San Diego

DESIGN GUIDELINES

- Stone Creek, San Diego
- Adams Avenue Design Guidelines, San Diego
- Mission Hills Business District Design Guidelines, San Diego
- Naval Training Center Historic District Landscape Design Guidelines, San Diego
- Naval Air Station Pensacola Base Exterior Architecture Plan, Pensacola, FL
- Naval Station Great Lakes Base Exterior Architecture Plan, Waukegan, IL
- MCAS Yuma Base Exterior Architecture Plan, Yuma, AZ
- MCAGCC Twentynine Palms Base Exterior Architecture Plan, Twentynine Palms
- MCB Camp Pendleton Base Exterior Architecture Plan, Camp Pendleton
- NCBC Gulfport Installation Appearance Plan, Gulfport, MS



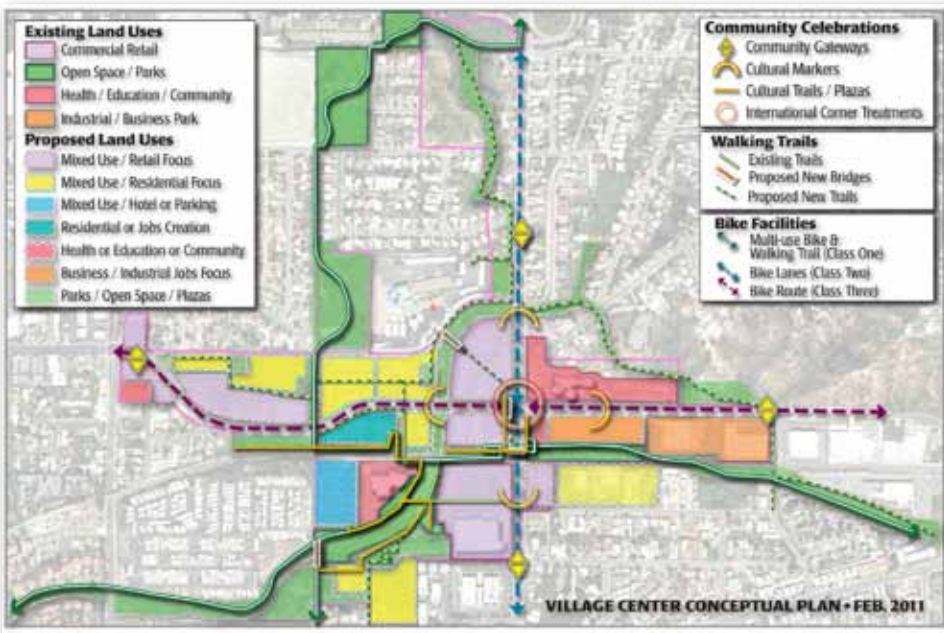
North Park Community Plan Update



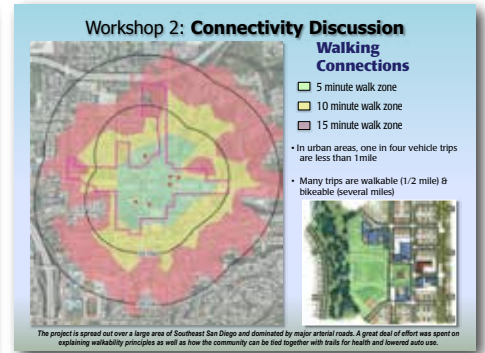
Park Legend:

- ① Stone Creek Central Park
- ② Westside Crossing
- ③ Westside Gardens
- ④ Westside Commons
- ⑤ Westside Terrace
- ⑥ Connector Park (Typical)
- ⑦ Creek Overlook Park (Typical)

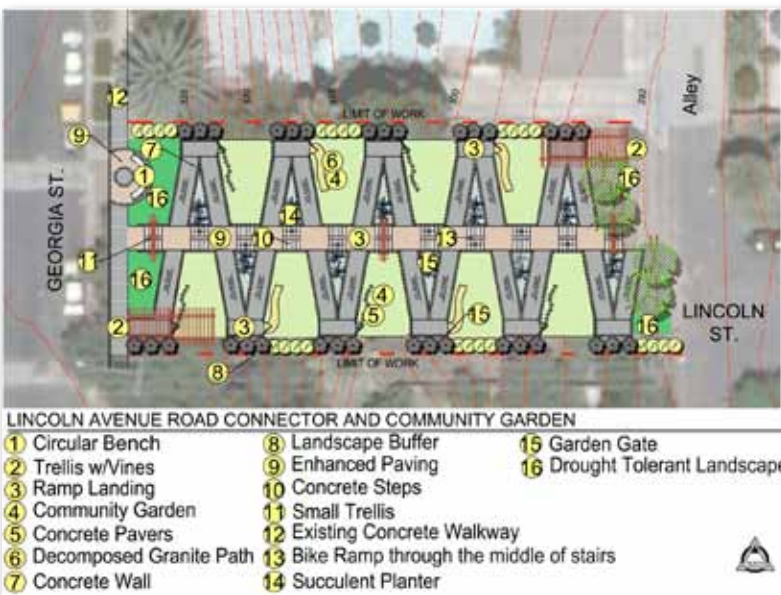
See Appendix 'A' For Plant Materials Legend.



Market Creek Plaza Village Urban Design Study



North Park Community Plan Update



North Park Community Plan Update



North Park Community Plan Update

KTU+A Departments

Planning

- Community Planning
- Mobility
- Resource Management

Federal Planning

- Master Plans
- MILCON Documentation
- Basic Facility Requirements
- Asset Evaluations
- Capital Improvement Plans
- Design Guidelines
- Special Studies

Landscape Architecture

- Public Spaces
- Parks and Recreation
- Health Care
- Education
- Housing
- Hospitality
- Corporate and Retail

Support Services

- Public Outreach
- GIS
- 3D Modeling and Simulations
- Sustainable Design
- Water Management
- Grant Writing

Community Planning



Planning + Landscape Architecture

Established in 1970, KTU+A is a San Diego-based planning and landscape architecture firm whose commitment to balancing human activities with the elements of nature has resulted in award-winning, creative, and sustainable projects throughout our community and the southwest.

Service to Our Clients

As our client, you can expect quality services that focus on your priorities and meet your deadlines and budgets. As your partner, our staff will provide planning and design solutions that are creative, clearly communicated, and well executed.

Our Approach

- Collaborate toward a common vision to attain uncommon results.
- Seek solutions that capture the context of the place, preserve existing resources, and integrate the values of the users.
- Shape the intersection of people and place.
- Implement in a sustainable and cost-effective manner.
- Evaluate and learn from our project experiences.

Knowledge and Experience We Bring to Your Project

The planning and design of a project requires an understanding of the regulations and requirements to protect the public's health, safety, and welfare; an understanding of the most innovative design technologies to meet current and future needs; an understanding of the needs and priorities of the users; and an understanding of the responsibilities of the client in terms of risk management, maintenance, future expansion opportunities, and costs. KTU+A takes these responsibilities seriously and strategizes with our clients and the consultant team to ensure the project meets and exceeds its goals and objectives.

Principals

- Sandra Swaner-Carmona, AICP
- Sharon Singleton, ASLA, CPSM
- Kurt Carlson, ASLA
- Mike Singleton, ASLA, AICP CTP, LEED-AP

Staff Resources/Licenses/Certifications - 32

- 10 Planners (4 AICP)
- 9 Landscape Architects (9 California and 3 Nevada; 2 LEED AP; 1 LEED Green Associate; 1 AICP Certified Transportation Planner)
- 4 Landscape Designers
- 2 Irrigation Designers (1 Irrigation Association Certified Irrigation Designer)
- 3 GIS Analysts
- 1 Graphic Designer
- 3 Administrators

Business Certifications

- Women Owned Small Business (Federal)
- Small Business (State of California)



... balancing human activities with the elements of nature